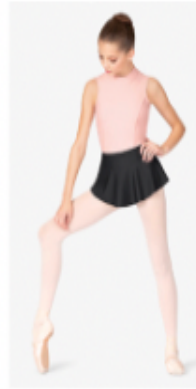


LEVEL 4 Classes (Apprentices) Required Attire for Class



TEAL Theatrical Teens
Adjustable Strap Camisole
Dance Leotard Style No: D5100 or
Girls Camisole Dance
Leotard
Style: D5100C

SKIRT: Brand LULLI
COLOR: BLACK
Womens "Alisa" Pull-On
Mesh Dance Skirt
Style No: LUB295



MARIIA CROWN
Women or Girls High Low Pull-On Skirt
Style No: ME635 (Women)
Style No: ME635C (Child Size)
COLOR BLACK



MARIIA CROWN
Women Boat Neck 3/4 Sleeve Leotard
Style No: ME634 (Adult size)
Style No: ME634C (Child Size)
COLOR BLACK

Ballet and Pointe Class Pink Tights (Seamed or Mock seamed for performance)

Ballet shoes, must be leather for performance, canvas for class is permissible.

Pointe Shoes-We RECOMMEND AND ENCOURAGE you get a proper fit and purchase at Dance Etc. in Raleigh, NC (ONLY WHEN told by their instructor that they are ready for Pointe shoes!)

Modern Class-they may wear long or short sleeve, snug fitting shirt and black tights. Socks are recommended for some of the technique.

Tap Shoes are the black oxfords (slip on or lace up are acceptable.) They may wear black tights, shorts or t-shirts (that are appropriate for dance).

Jazz Shoes Tan Slip-on or lace up. Jazz students may wear black tights, but no shorts or t-shirts during class.



Any warm-ups must be "Dance Warm-ups" and must be removed when instructed to do so. Dancers may wear any black leotard on Thursday, but must own the ¾ sleeve for performances or special lessons and showcases or pictures. The last class of each month, dancers may wear their favorite leotard and skirt.